

CURRENT TRANSFORMERS

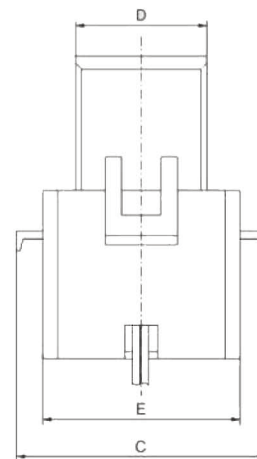
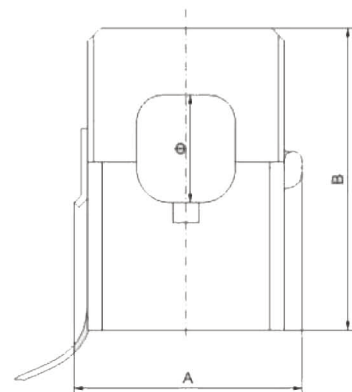
TQ10 - Split core current transformer



- Designed to facilitate the installation in a new or already existing networks
- Easy opened
- They may be installed an connected without any supply interruption.

The TQ10 is a miniature current transformer. It has the characteristics of small size, light weight, and easy installation. Rated current output is V. Inner hole size 10mm. The flame-retardant plastic housing, protected from moisture, stable in performance, and require no maintenance. When installin g this product, it s strictly prohibited to open circuit secondary. After connecting the secondary circuit, CT should be hung on the bus or fixed with nylon tie

Dimensions:



TQ10 Technical Data

Rated frequency	50/60Hz
Rated test voltage	3kV Ac (1 min)
Rated short-time thermal current (I _{th})	60 I _n
Rated dynamic current (I _{dyn})	2.5 I _{th}
Rated voltage (U _m)	0.72kV AC
Continuous overload (I _d)	1.2 I _n
Temperature	Operating: -10 ... 50°C Enviromental: -15 ... 40°C
Housing	self-extinguishing class VO
Safety factor	FS 5
Working voltage	≤ 660V
Elevation	≤ 1000m
Installation place	Indoor
Cable length	12 m

TQ10 Technical Features

Type	Ratio	Accuracy class
TQ10	50A/0.333V	1
	60A/0.333V	1

Dimensions in mm

Model	∅	A	B	C	D	E
TQ10	10	29	41	/	14	26